

Weave the World's Best Handtowel

STRUCTURE

Plain weave with pattern floats, 4 shafts and 3 pedals

| | |
|-------------------|--|
| WARP | 16/2 unbleached cotton, ca 13,600 m/kg Bockens yarns, Holma-Helsingland |
| WEFT | 16/2 cotton, doubled, unbleached as in the warp and dyed ca 12,960 m/kg Bockens yarns, Holma-Helsingland |
| REED | 40/10, 2 ends to a heddle, 4 ends to a dent |
| SETT | 16 ends/cm |
| WIDTH IN REED | 45.25 cm |
| FINISHED WIDTH | ca 38, ca 15% shrinkage |
| WEFT SETT | 10 picks/cm, doubled |
| NR. OF ENDS | 728 (CORRECTION! NO OF ENDS. 7/7 2020) |
| YARN REQUIRED | |
| per metre of warp | 55 g |
| per woven metre | 70 g divided between the unbleached and green cottons |

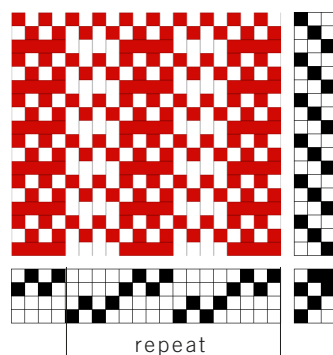
WEAVING, MAKING UP

Weave with doubled weft and a straight shedding sequence (1, 2, 3) throughout.

Weave stripes by alternating the unbleached and dyed wefts.

Zig-zag along a few cm away from the woven edge at either end.

Unravel the weft to make a little fringe.



ANNA ZETTERLUND

