

Whatcom Weavers Guild Newsletter



Celebrating 40 years!

October Newsletter

The weather turns cooler and the excitement builds!

October is the month to celebrate National Spinning and Weaving Week – did you know? It's October 3rd to 9th – what are you doing to celebrate this art that we all love so much (other than weaving busily for Fibers & Beyond, that is!).

October is the big month for our Guild – our chance to strut our stuff at the 12th annual Fibers & Beyond Show. NOW is the time to send out those postcards and hang those posters and signs – we're celebrating the Guild's 40th anniversary this year, and we're planning on the biggest and best F&B yet.

And of course, the Holiday Season is just around the corner, so hands are flying making wonderful gifts for family and friends. Have fun, and see you at our October 12th meeting, featuring Seiko Purdue, Associate Professor in the Fibers/Fabrics area of the Department of Art at Western Washington University, presenting a great program on ikat, the Asian method of preparing colorful threads for your loom.

Pat Fisher, Newsletter Editor (pat.fisher@comcast.net)

Mugs and Rugs: A BIG THANK YOU to many fiber enthusiasts who brought mugs and rugs to be given to our community women who can use a touch of warmth. THANK YOU! and to those who helped fill and wrap the mugs at our September meeting.

Those of you who spoke to me about a mug/rug coming - - please call me and let's put a meeting place together that your mug and rug may be added to the group to be given. Joyce Noordmans 384 -1930.

Guild Board 2011-2012

President: Karen Perry / karendanperry@yahoo.com

Past President: Donna Hunter / gndhunter@telcomplus.net

Vice President & Programs: Sheri Ward / sheriward@clearwire.net

Secretary: Karen Racich / karen.racich@gmail.com

Treasurer: Barbara Young / jerusha28@comcast.net

Workshops: Judy Blount / jmblount@comcast.net

& Joan Dudley assisting / joandudley@yahoo.com

Librarian: Betsy Turner / bltweaver.betsey@gmail.com

& Megan Kinman / megkdolphin@yahoo.com

Membership: Toni Wade / tprwade@yahoo.com

Education: Joyce Noordmans / tandjdesign@fidalgo.net

Hospitality: Cathy Thompson / redhouse@dishmail.net

Member-at-Large/ANWG Rep: Jenni Jimmerson

Newsletter Publisher: Pat Fisher / pat.fisher@comcast.net

Wool Show: Marcia Ford / samijo47@q.com

Fibers & Beyond Chair: Yvonne Madsen / Yvonne.m@comcast.net

Web Site: Maggie Weyers / mageez@comcast.net

Programs for 2011-2012

Nov. 9: Nadine Sanders on wearables for every body

Dec. 14: Ron Snyder will show us how he makes brooms as he tells stories

Jan. 11: TBA

Feb. 8: TBA

March 14: Linda Kubik on how to sew with hand-wovens

April 11: Teresa Ruch on achieving great color and drape for wearables

May 9: Partner projects

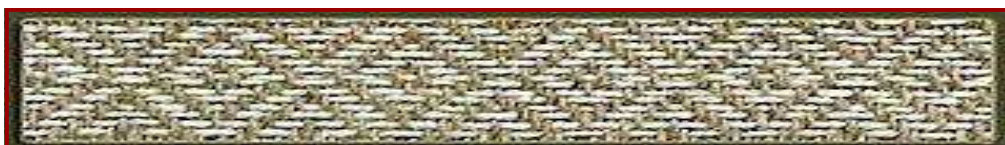
June 13: Stash sale

Meetings held at St James Church (lower level)

910, 14th St., Bellingham.

6.30pm Social time

7.00pm Meeting start time





Programs

Our program on October 12 will feature ikat in a presentation by Seiko Purdue, Associate Professor in the Fibers/Fabrics area of the Department of Art at Western Washington University. Ikat is a technique in which warp or weft threads, or both, are tie-dyed before weaving, and it is used extensively in Indonesia, Japan, and other part of Asia. Seiko will show some of the design possibilities one can achieve with this technique, explain the basic process, and show some examples, including some amazing ikat with pictorial designs, Kurume-kasuri, from her recent travels to Kyushu, Japan.

Library News

I would like everyone to think about the guild's library when they are out and about and see books on fiber arts. If there is a new book that you see advertised in a magazine, journal or on the web that looks like a good addition to what the guild has already acquired then send me an email with the title of the book and the author. If you can, send me the ISBN number, but as long as I have the name of the book and the author then finding it is not a problem. I will be updating the book information in the next few months so that guild members will have an easier time of seeing what is available.

If you want to access the library before the next guild meeting, just let me know. I would be happy to open up and show what we have available to anyone who is interested. Otherwise look for me at the next meeting and I would be happy to show it then. Also, please remember that we have a floor loom and a table loom available for rental. There is a deposit of \$100 but that check is not cashed and is returned when the loom comes back to the storage unit. If you have any questions please contact me and I would be happy to go over the paperwork with you.

Megan Kinman, WWG Librarian. megdolphin@yahoo.com

Daytime Weavers

The Daytime Weavers Group will be meeting on Thursday, October 6 at 10:30 at the Roeder Home. There will be no mini workshop this month as we are busy working on items for the sale. Please bring a project to work on, show and tell and a lunch.

Hope to see you there.

Kathy Sano. DSano@aol.com.

WWG Board Meeting Summary

September 22, 2011

Discussions:

Guidelines for the scholarship fund are currently being prepared by the scholarship committee. When finalized they will be presented to the board and subsequently to the general membership.

Preparations for events at the Lightcatcher are under way. Ads will appear in local magazines and newspapers and bookmarks are available for placement in shopping bags at Fibers and Beyond.

A standard mileage allowance of 25cents/mile was decided upon for workshop presenters who ask for one. This will be added to the Guild handbook.

The librarian will bring library materials to the meetings that are related to the theme of the program or overall theme of the year.

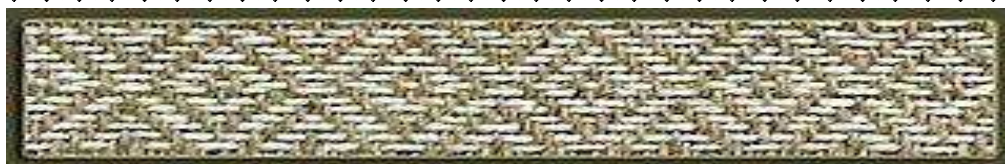
The president issued a challenge to all members to wear handmade clothing or accessories to all future meetings and to Fibers and Beyond.

Motions:

Moved, seconded and approved that Karen Perry and Barbara Young be signers for all accounts held by WWG at Peoples Bank.

Moved, seconded and approved that funds from the stash sale be designated specifically for a scholarship fund, along with future collections from basket drawings and donations.

Karen Perry, WWG President. karendanperry@yahoo.com.





Workshops

Whatcom Weavers Guild is offering four exciting workshops during the 2011 - 2012 calendar year. Each class is designed to focus on "wearable" handwovens, and all will enhance our weaving, felting, and embellishing skills. If you are interested in any of these workshops, please contact Judy Blount (jimblount@comcast.net) and plan to reserve your space by sending a \$25 deposit payable to WWG to Whatcom Weavers Guild, P.O. Box 403, Bellingham, WA 98227. A sign-up sheet for each will be circulated during future Guild Meetings.

Patterned Lace Felt Scarf -- Friday, November 4, 2011

Instructor: Pat Spark

Our instructor says of this one-day workshop: "Some types of wool make a wonderful lacy felt without much effort involved. The unique felting properties of Wensleydale wool will be used to create a beautiful but strong lace felt scarf base. Motifs will be added into the lace base to create areas of solid design."

Deposit is due October 4, 2011, final payment is due October 12, 2011. Send checks payable to WWG to Whatcom Weavers Guild, P.O. Box 403, Bellingham, WA 98227.

This workshop will be held at the Cordata Co-Op in the Roots Room, 9 a.m. to 4 p.m.

Approximate cost: \$85/6 participants; \$45/12 participants; plus \$10 supply fee paid by each participant directly to Pat Spark.

Inkle Weave Trim Techniques/Inlay Techniques and Beyond -- Saturday, February 4, 2012

Instructor: Robyn Spady

Robyn tells us: "This will be a 1/2 day inkle weaving hands-on workshop, with an emphasis on trim techniques, combined with a 1/2 day class on 'inlay techniques and beyond' as a way of embellishing fabric as it's woven. These two informative workshops will be followed by a short jewelry class to learn techniques to use yarns and fabric to make jewelry to coordinate with the 'fabulous garments they are going to make.'"

WECU Holly Education Center will be the venue for this all-day workshop, 9 a.m. to 5 p.m.

Approximate cost: \$55/10 participants; \$35/15 participants; plus \$9.00 supply fee (\$4/inkle weave section; \$5/inlay section) to be paid directly to Robyn.

One Pattern/Many Variations Using Handwoven Fabric -- Thursday and Friday, March 15 and 16, 2012

Instructor: Linda Kubik

Linda says: "Is there ever a "perfect" pattern? What if you don't have enough fabric or need to add a piece? How about changing the collar, adding pockets? Using Linda's Elements 008 pattern, we'll explore fit, fashion, individual style and customizing a pattern. Bring your handwoven fabric and frustrations and learn how to think creatively as a sewer." Three yards of at least 36 inch width handwoven fabric is required for this class. An additional one yard of coordinating fabric for trim and binding is needed, but something from Robyn's class might be appropriate. Participants must provide their own sewing machines.

Squalicum Harbor Clubhouse will be our venue for this two-day workshop, 9 a.m. to 4 p.m.

Approximate cost: \$120/12 participants; \$125/10 participants; \$240/6 participants plus \$25 lab fee to be paid by each participant to Linda.





Workshops (cont.)

Vested Interest/Embellishing the Surface -- Saturday and Sunday, May 5 and 6, 2012

Instructor: Anita Luvera Mayer

This two-day workshop will present an overview of how to transform one generic vest pattern into a wide variety of designs. The lecture/demonstration will cover such topics as weaving with sewing thread, recycling shoelaces, lining methods, making vests reversible, modular knitting, and more. Everyone will receive a basic vest pattern, learn how to size it and will have the opportunity to try on a variety of vest styles with patterns available to copy. Inspiration will be provided through books, ethnic examples, and the instructor's personal collection of vests. It includes a hands-on exploration of simple yet dramatic ways to individualize clothing and accessories using mirrors, creative stichery, innovative beading, couching, and wrapped rings. Each participant will begin a reference notebook of samples and be on the way to creating a wearable work of art.

WECU will be the venue for this two-day workshop, 9 a.m. to 4 p.m..

Approximate cost: \$90/10 participants; \$75/12 participants; plus \$20 lab fee to be paid by each participant to Anita.

Fiber Arts at the Lightcatcher

The Whatcom Museum will host a show and sale by our guild, entitled Fiber Arts at the Lightcatcher, on Saturday, Nov. 19 from noon to 4 p.m. in the new Lightcatcher building.

Our guild will demonstrate and provide hands-on opportunities for weaving and spinning for the public; hand-crafted fiber work of the guild's membership will be available for show and sale.

This show comes only a month or so after Fibers & Beyond, and many of the same procedures and committee members will be involved. Items that were at F&B can be in this show, as can items you didn't quite finish in time, along with things that are strictly for show, not sale. We will use much the same décor as for F&B, transforming the Lightcatcher into a weaver's studio for a day. Acceptance criteria will be the same as for F&B, as will the 15% commission for sales. There will be no fee for entering items in the show and sale. There will be more emphasis on demonstrations and hands-on activities, especially for children. Also, you should let anyone you invite know there is an admission fee of \$3 for those who are not museum or guild members.

We will be setting up on Friday evening, November 18, from 3 p.m. to 7 p.m. If we need additional setup time, we can do that on Saturday morning.

Announcements for the event are already in Entertainment News NW and in the Museum members' newsletter, and will appear on the Museum website.

Wanted for the Lightcatcher Fiber Arts event

Felting wool wanted - if anyone has wool fiber suitable for the kids program that we will be doing at the Lightcatcher Museum with our display on November 19, please contact Donna Hunter. We also could use a couple of volunteers to assist the kids. 332-5526





Fibers & Beyond Show and Sale. October 14th and 15th.

Hope you all are having fun weaving, spinning, knitting, jewelry-making or whatever is your wonderful skill!
Final date for registration is September 30th – contact Yvonne Madsen (756-2018) or Barbara Young (733-6344) if you haven't already registered for entry.
The next Fibers & Beyond Committee meeting will be Thursday, October 6, 1 p.m. at Security First Mortgage Co. on Meridian. Thanks!

Work Schedule for the show and sale

From Jane Coombs – if you have any questions or changes for the schedule, please contact me at 398-1637 or djembs@nas.com. Thanks to all the volunteers!

Friday Daytime (Set-up) - 8-3 P.M.

Check-in: (Barbara Young)

Kathy Hutchinson, Toby Smith, Joan Cunningham, Kathy Green

Acceptance: (Barbara Snow)

Set-up: (Jenni, Jane, Donna, Cathy)

Toni Wade, Judy Blount, Pat Fisher, Sheila Reid, Cathy Taggart, Guo Cheng, Alannah LaMothe, Kathleen Bander, Peg Nathon, Carol Henry, Leah Tarleton

Friday Evening (Showtime!) - 6-9 P.M.

Cashier: (Sheri Ward – schedule already supplied to cashiers)

Sales Tally: (Elinor Tapio, Louise Bayma)

Concierge: (Kathy Green)

Demo/Educ: (Sondra Rose, April Muegge)

Toni Wade - spinner, Marilyn Monahan - demo

Hospitality: (Marcia Ford)

Floor: (includes floor walk, greeter, jewelry)

Megan Kinman (jewelry), Gloria Liebowitz, Karen Racich, Joan Dudley, Margaret Magic

Saturday morning: 10-1 P.M.

Cashier: (already supplied to cashiers by Sheri Ward)

Sales Tally: Elinor, Vonda Krear

Concierge: Kathy, Maggie Weyers

Demo/Education: Sondra, April, Barbara Atkins (spinner), Karen Racich - demo

Hospitality: Marcia

Floor: Megan Kinman (jewelry), Kathy Sano, Julie Barnes, Carol Berry, Joan Dudley,

Peg Nathon

Saturday afternoon: 1-4 P.M.

Cashier: (see schedule)

Sales Tally: Elinor, Kathy Hutchinson

Concierge: Kathy, Julie Barnes

Demo/Education: Sondra, April, Toni Wade (spinner), Rosalie Nast (weaving), Allen Berry (demo)

Hospitality: Marcia Ford

Floor: Megan Kinman(jewelry), Mary Lou Butler, Barbara Atkins, Margaret Magic,

Alannah LaMothe

Check-out: (Toby Smith) Loretta Hogg

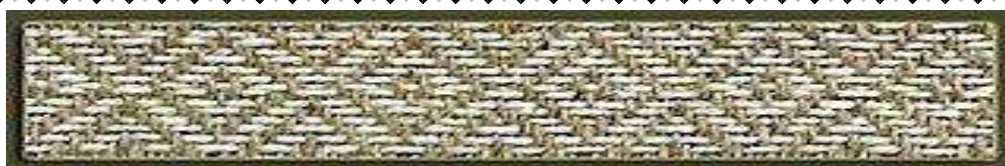
HELP!!

OK OK I know I should have done this earlier but I've been off traveling and just got back.

I am looking for two people to help me with check-out at the end of the Fibers & Beyond sale.

This is an easy job. It starts after 4 on Saturday when the sale ends and should take less than a couple of hours.

This would be a good job for any new member that would like to meet a *superbly terrific, charming, talented, witty, nice, intelligent, glamorous, young, charismatic, snappy dressing EXOTIC FOREIGNER* and experience the great joy of working side by side with her at obviously the MOST IMPORTANT, fun, and rewarding aspect of Fibres and Beyond 2011: check-out.





Classifieds:

Loom (with history) for sale

From Sondra Rose:

Hi Sondra!

Thank you for our conversation the other evening. I am attaching two photos of the loom and a blurb below, including a little history. I don't really know enough about weaving to know how well known Mary Meigs Atwater is, but she lived with her son and daughter-in-law across the street from my grandparents in Salt Lake City. She found some looms in an outdoor storage yard at the University and had people, including my grandfather, restore them for her so she could teach weaving. This loom is the one my grandfather restored for her. I summed the story up below.

I hope this is helpful! Mostly I just want this loom to go to someone that appreciates and weaves on it!

Thanks!

Roxanne

For Sale: Working Jack Loom

Looking for a loving home for beautiful working floor jack loom foot print 44" deep x 42" across, 39" high, weaving width 39". 16 frames, 18 pedals. Comes with shuttles, 4 reeds and additional heddles and custom-made bench. Restored by owner's grandfather in Salt Lake City, 1940s as a teaching loom for Mary Meigs Atwater. Patterns books written by Mary Meigs Atwater available for sale with loom. Bench stands 23" high, 30" long. Loom residing in Bellingham area. Please contact Roxanne for more information or to make an offer: [\(650\) 704-5043](tel:6507045043) or rcrittenden@gmail.com.





Shows and other events

LaConner Quilt Show

2011 Quilt Festival
Sept 30 - October 2

The 2011 Quilt Festival is a celebration that includes a three day show of Juried & Judged quilts Friday (9:30-5), Saturday (9:30-5), Sunday (10-4) at Maple Hall and the La Conner Quilt & Textile Museum. \$10 donation, includes entrance to both venues, below.

Maple Hall: Juried & Judged show, demonstrations by Nancy's Needlers, specialty vendors, silent auction, and quilt appraiser, Beverly Dunivent.

October 6 Whidbey Weavers Guild Meeting

Our meeting runs as follows:

10:00 - 11:00am Business Meeting

11:00 - noon Show & Tell and other fiber presentations

noon - 12:45pm Brown Bag Lunch

12:45 - 1:45 Program with Lisa Harkins, "Paper in Textiles".

1:45 - 2:00 Wrap up/clean up

Pacific Northwest Art School(formerly Coupeville Arts Center)15 NW Birch Street

Coupeville WA 98239

The Pacific Northwest Art School is the first street on the left off North Main Street as you enter Coupeville from Highway 20.

Important parking information! Parking on the street can only be the side **opposite** the School and the additional space at the end of the street in the unpaved area. There are only a few spaces in the Art School lot itself so you need to drop off items or people please do then park elsewhere. Do not park on the street on the same side as the Art School as this is a tow away zone.

Show – Arts Alive, LaConner, WA. November 4-5

Note from Anita Luvera Mayer:

Contemporary clothing designed by featured artist, Anita Luvera Mayer, will be sold during Arts Alive in La Conner, WA. This is the first time in the history of Arts Alive that a textile artist has been featured and the only time Anita will have garments to sell. The event opens at Maple Hall on Friday, November 5th at 5:00 p.m. and continues thru November 6th and 7th. Details regarding the additional participating artists available on line at Arts Alive.

Pat Spark at the Whatcom Museum

The Whatcom Museum is bringing Pat Spark, one of the founding members of our guild, to Bellingham in November. While she is here, Pat will give two workshops and a talk about her fiber adventures over the past 40 years.

Pat is well known for her work in felting, and has published several books and articles on the topic. She started her textile career at WWU, went on to earn an MFA at the University of Washington, and was a professor of art for 16 years. She is a partner in the publishing firm Fine Fiber Press and Studio, which holds workshops, publishes books on fiber arts, and sells equipment for felt-makers and tapestry weavers. She has taught around the world, including a recent trip to Kyrgyzstan where she taught contemporary felt-making.

Her talk and slide presentation will be on Saturday, Nov. 5 at 7 p.m. in the Whatcom Museum Old City Hall Building. Admission is free to museum and guild members, and there is a \$3 suggested donation for non-members.

Pat is also offering two workshops, one sponsored by the Whatcom Museum, the other by our guild. The guild-sponsored workshop is on Friday, Nov. 4, and details are elsewhere in this newsletter. The museum-sponsored workshop will be on Sunday, Nov. 6 from 10 a.m. to 4 p.m. on Optical Color Blending for Feltmakers and Spinners, and it will be held at the Lightcatcher Studio.

Cost: \$80 for museum and guild members or \$90 for non-members, plus a \$25 lab fee for supplies. Maximum number of students, 12; minimum, 5 to 6. To register, contact Bellingham Parks and Recreation Office, 778-7000 or

www.cob.org.





Upcoming Calendar Dates To Remember!

- | | |
|---------------|--|
| September 30 | Deadline to register for Fibers & Beyond Show and Sale |
| October 12 | WWG October meeting |
| October 14-15 | Fibers & Beyond Show & Sale, Hampton Inn, Fox Hall |
| November 4 | Pat Spark's Guild Workshop, Cordata Co-op. 9-4p.m. |
| November 5-6 | Pat Spark's Museum Workshop and presentation |
| November 4-6 | Arts Alive Show, LaConner |
| November 9 | WWG November meeting |
| November 19 | Fiber Arts Show at the Lightcatcher, Whatcom Museum |



Whatcom Weavers Guild
Celebrating 40 years!

